

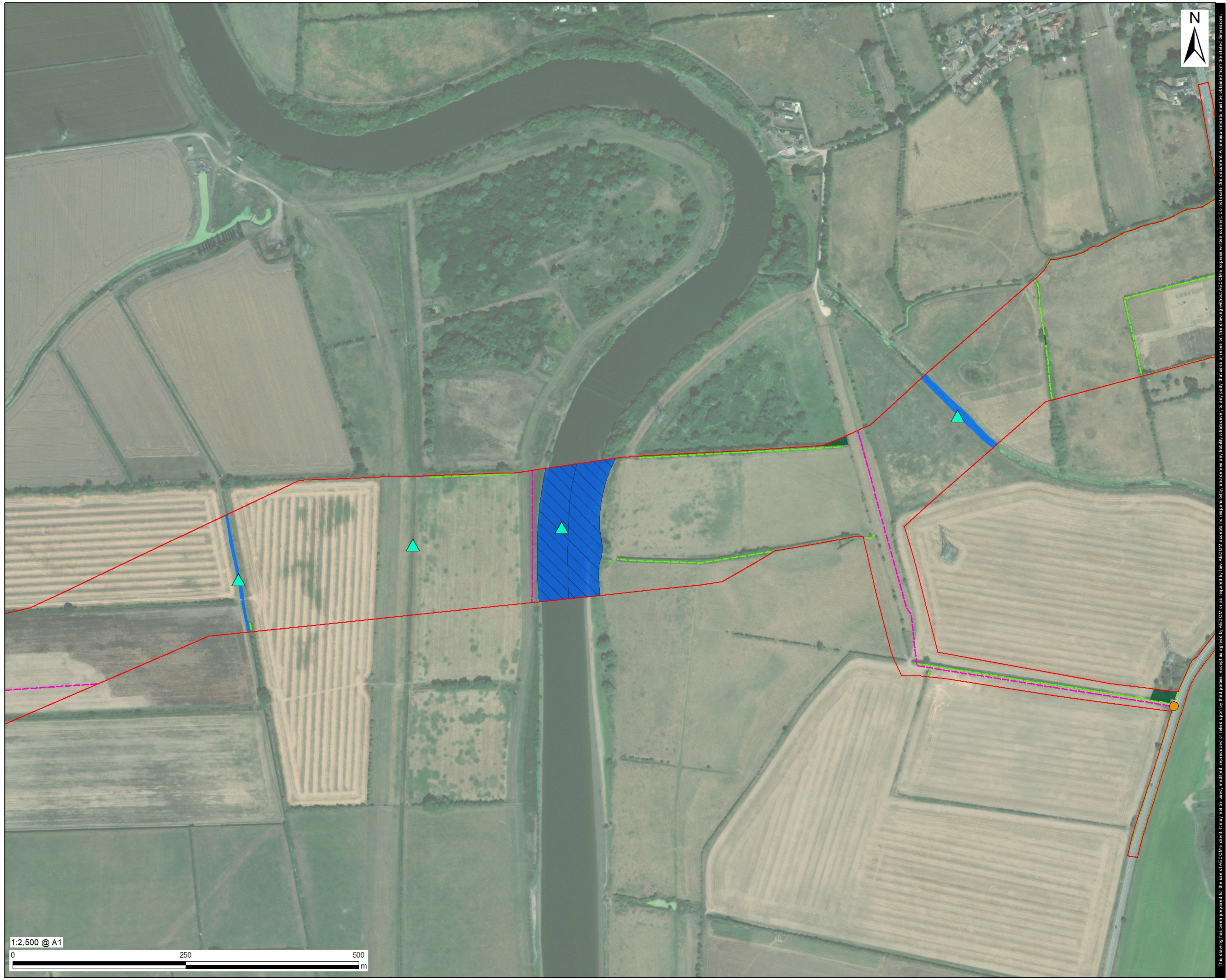
**Tillbridge Solar Project
EN010142**

Volume 7
Framework Landscape and Ecological Management Plan
Part 3 of 3
Document Reference: EN010142/APP/7.17

Regulation 5(2)(q)
Infrastructure Planning (Applications: Prescribed Forms and
Procedure) Regulations 2009

April 2024
Revision Number: 00

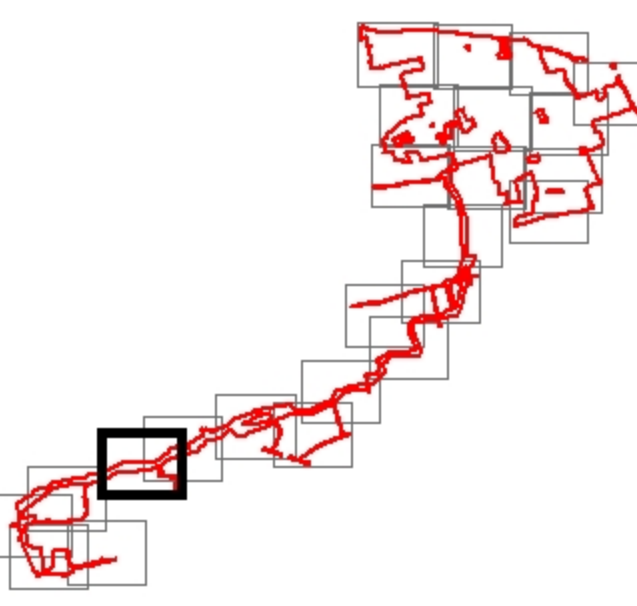
tillbridgesolar.com



LEGEND

	Order limits
Existing Features and Constraints	
	Trenchless Crossing - Watercourse Crossing
	Cable Route Corridor Access
	Existing Public Rights of Way
	Existing Hedgerow
	Removal and Reinstatement of Hedgerow
	Retained Vegetation
	River Trent
	Existing Watercourse

SHEET LAYOUT



NOTES

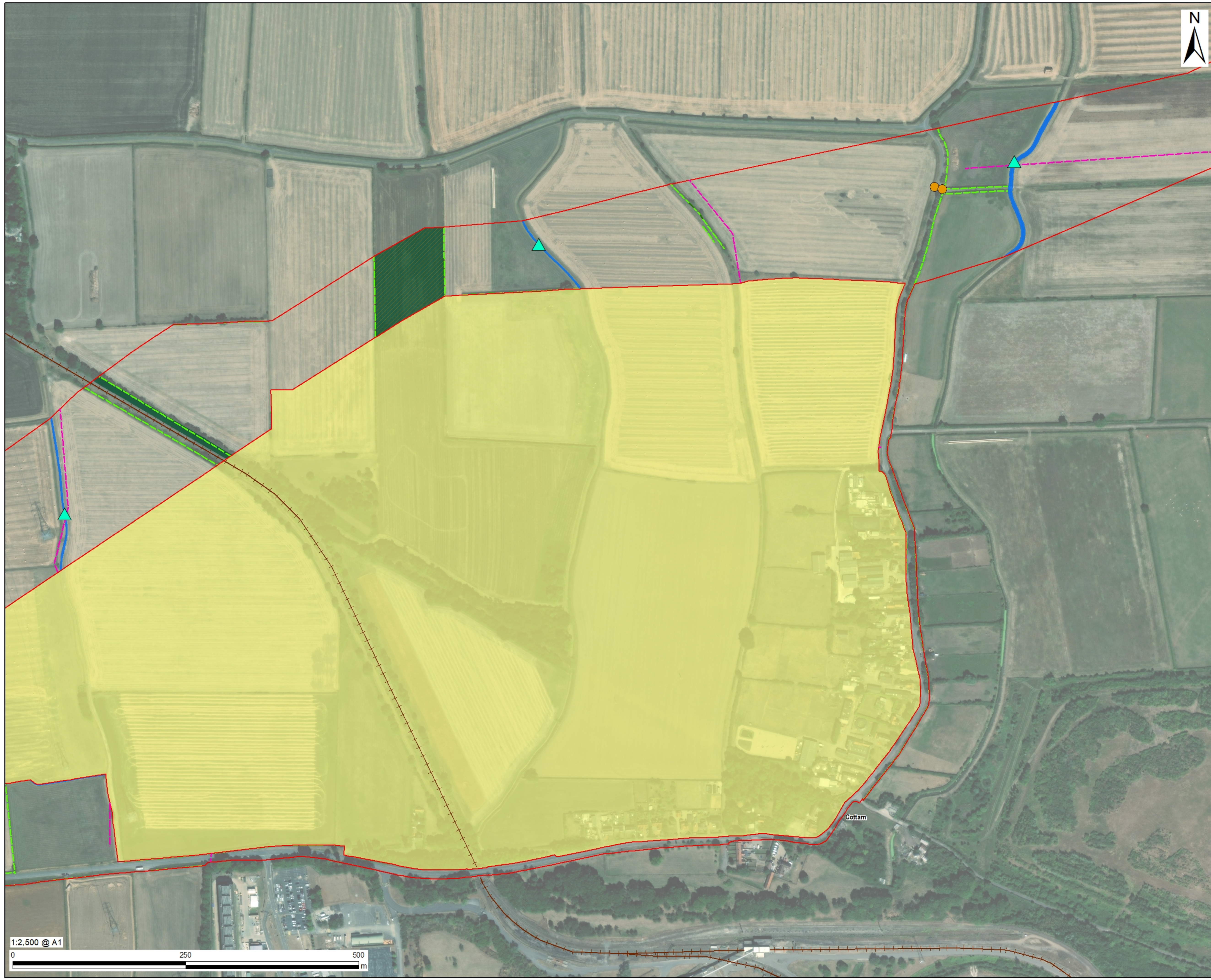
Aerial Basemapping Service Layer Credits:
Source: Esri, Maxar, Earthstar Geographics,
and the GIS User Community
The layout is taken from the Illustrative
Layout and some component locations may
be subject to change (e.g., solar stations,
BESS, and tracks), as allowed by the DCO
Application.

ISSUE PURPOSE

DCO Submission
PROJECT NUMBER
60677969
PLAN TITLE
Indicative Landscape Masterplan
FIGURE NUMBER
21 of 25



The drawing has been prepared for the use of AECOM's client. It may not be used, modified, reproduced or relied upon by third parties, except as agreed by AECOM or as required by law. AECOM accepts no responsibility, and denies any liability whatsoever, to any party that uses or relies on this drawing without AECOM's express written consent. Do not scale this document. All measurements must be obtained from the stated dimensions.



PROJECT

Tillbridge Solar Project

CLIENT

Tillbridge Solar Ltd.

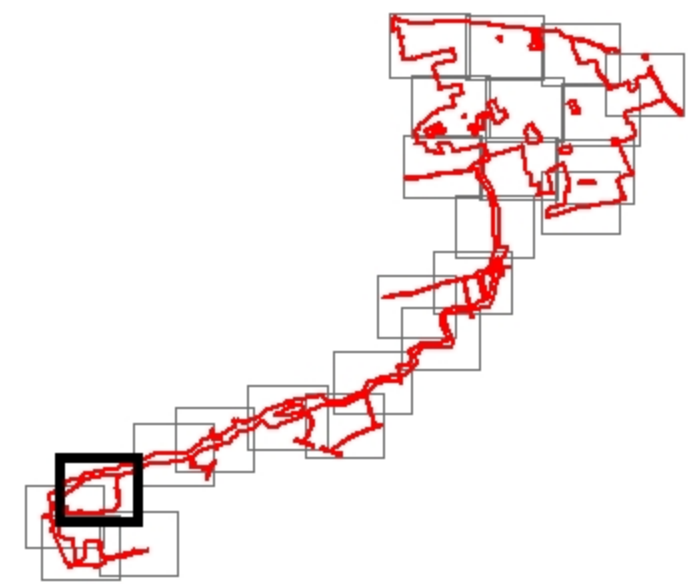
CONSULTANT

Aldgate Tower
2, Leman Street
London, E1 8FA
United Kingdom
T +44-0207-645-2000

LEGEND

- Order limits
- Land not included in the Order limits
- Existing Features and Constraints**
- Trenchless Crossing - Watercourse Crossing
- Cable Route Corridor Access
- Existing Public Rights of Way
- Existing Hedgerow
- Removal and Reinstatement of Hedgerow
- Disused Railway Line
- Existing Woodland
- Retained Vegetation
- Existing Watercourse

SHEET LAYOUT



NOTES

Aerial Basemapping Service Layer Credits:
Source: Esri, Maxar, Earthstar Geographics,
and the GIS User Community
The layout is taken from the Illustrative
Layout and some component locations may
be subject to change (e.g., solar stations,
BESS, and tracks), as allowed by the DCO
Application.

ISSUE PURPOSE

DCO Submission

PROJECT NUMBER

60677969

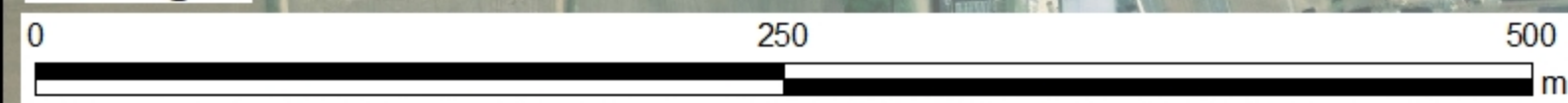
PLAN TITLE

Indicative Landscape Masterplan

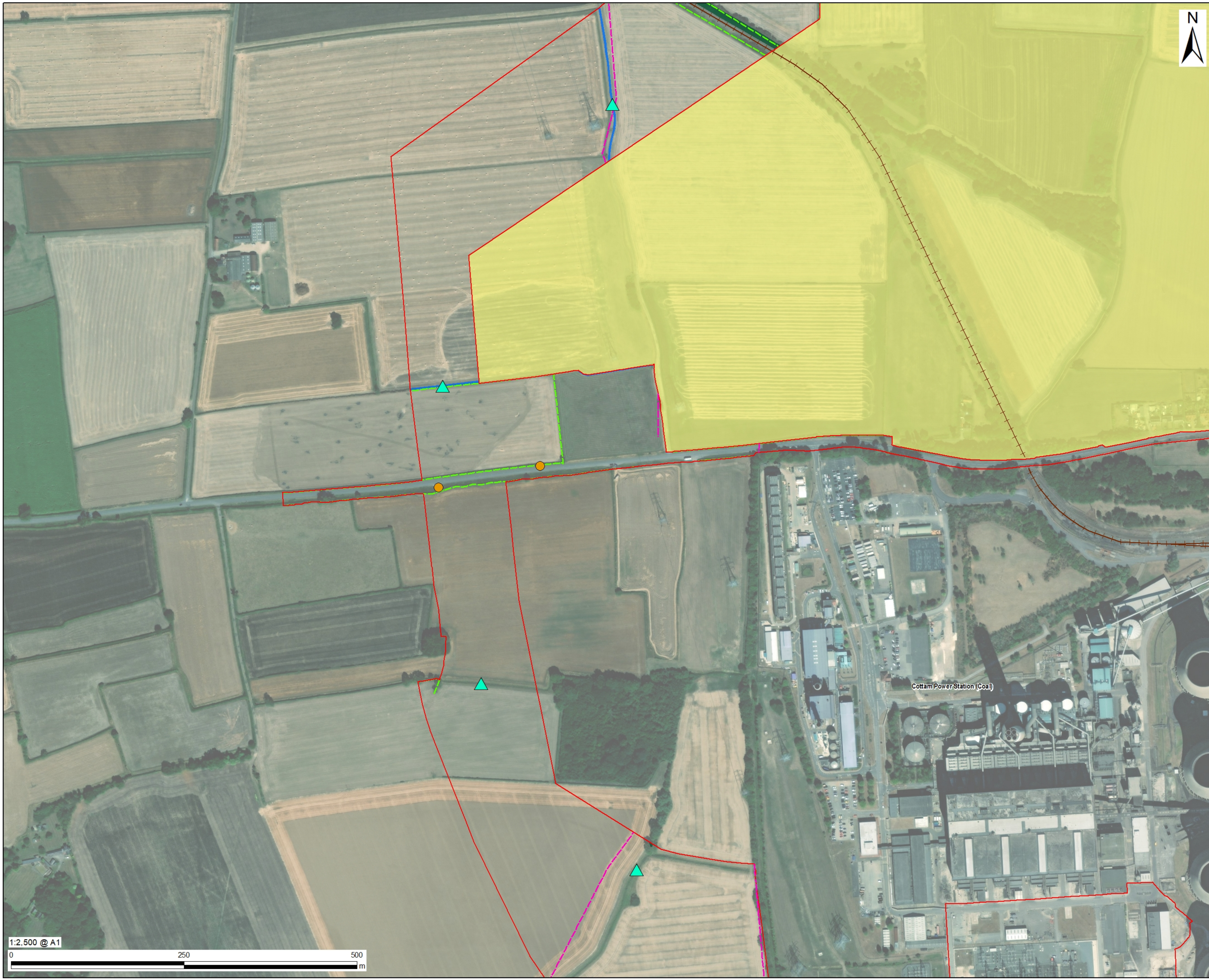
FIGURE NUMBER

22 of 25

1:2,500 @ A1



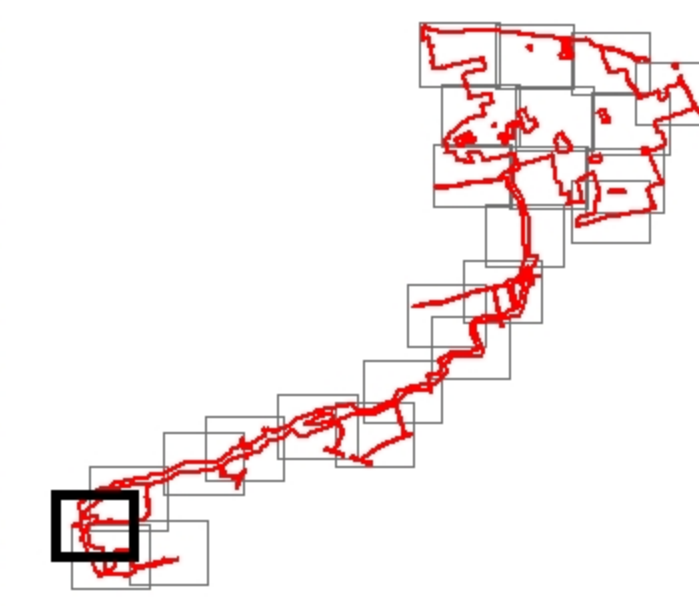
The drawing has been prepared for the use of AECOM's client. It may not be used, modified, reproduced or relied upon by third parties, except as agreed by AECOM or as required by law. AECOM accepts no responsibility, and denies any liability whatsoever, to any party that uses or relies on this drawing without AECOM's express written consent. Do not scale this document. All measurements must be obtained from the stated dimensions.



LEGEND

	Order limits
	Land not included in the Order limits
Existing Features and Constraints	
	Trenchless Crossing - Watercourse Crossing
	Cable Route Corridor Access
	Existing Public Rights of Way
	Existing Hedgerow
	Disused Railway Line
	Existing Woodland
	Retained Vegetation
	Existing Watercourse

SHEET LAYOUT



NOTES
Aerial Basemapping Service Layer Credits:
Source: Esri, Maxar, Earthstar Geographics,
and the GIS User Community
The layout is taken from the Illustrative
Layout and some component locations may
be subject to change (e.g., solar stations,
BESS, and tracks), as allowed by the DCO
Application.

ISSUE PURPOSE
DCO Submission
PROJECT NUMBER
60677969
PLAN TITLE
Indicative Landscape Masterplan
FIGURE NUMBER
23 of 25



The drawing has been prepared for the use of AECOM's client. It may not be used, modified, reproduced or relied upon by third parties, except as agreed by AECOM or as required by law. AECOM accepts no responsibility, and denies any liability whatsoever, to any party that uses or relies on this drawing without AECOM's express written consent. Do not scale this document. All measurements must be obtained from the stated dimensions.



PROJECT

Tillbridge Solar Project

CLIENT

Tillbridge Solar Ltd.

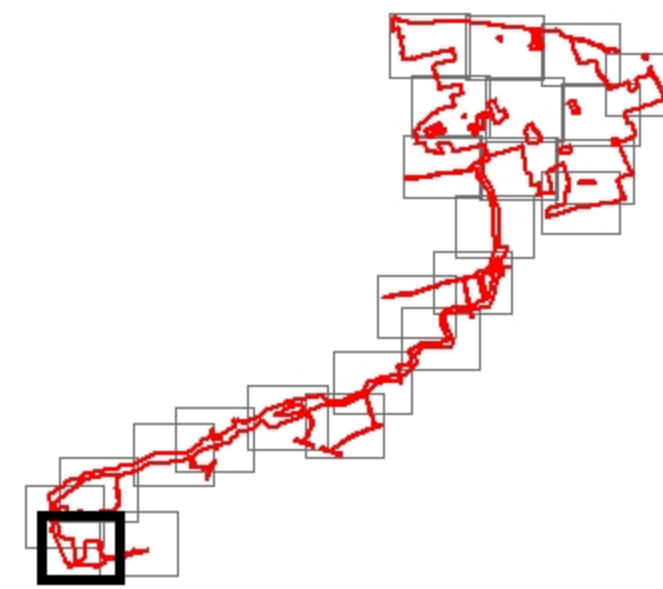
CONSULTANT

Aldgate Tower
2, Leman Street
London, E1 8FA
United Kingdom
T +44-0207-645-2000

LEGEND

- Order limits
- Existing Features and Constraints**
- ▲ Trenchless Crossing - Watercourse Crossing
- Cable Route Corridor Access
- Existing Public Rights of Way
- Existing Hedgerow
- Removal and Reinstatement of Hedgerow
- Disused Railway Line
- Existing Woodland
- Retained Vegetation
- Existing Watercourse

SHEET LAYOUT



NOTES

Aerial Basemapping Service Layer Credits:
Source: Esri, Maxar, Earthstar Geographics,
and the GIS User Community
The layout is taken from the Illustrative
Layout and some component locations may
be subject to change (e.g., solar stations,
BESS, and tracks), as allowed by the DCO
Application.

ISSUE PURPOSE

DCO Submission

PROJECT NUMBER

60677969

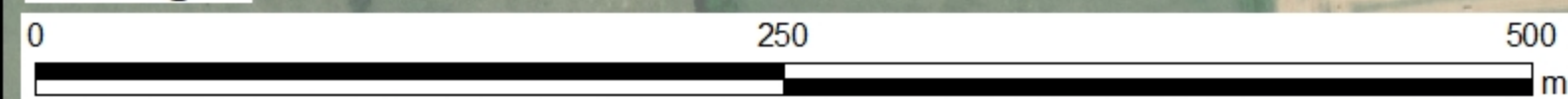
PLAN TITLE

Indicative Landscape Masterplan

FIGURE NUMBER

24 of 25

1:2,500 @ A1



The drawing has been prepared for the use of AECOM's client. It may not be used, modified, reproduced or relied upon by third parties, except as agreed by AECOM or as required by law. AECOM accepts no responsibility, and denies any liability whatsoever, to any party that uses or relies on this drawing without AECOM's express written consent. Do not scale this document. All measurements must be obtained from the stated dimensions.



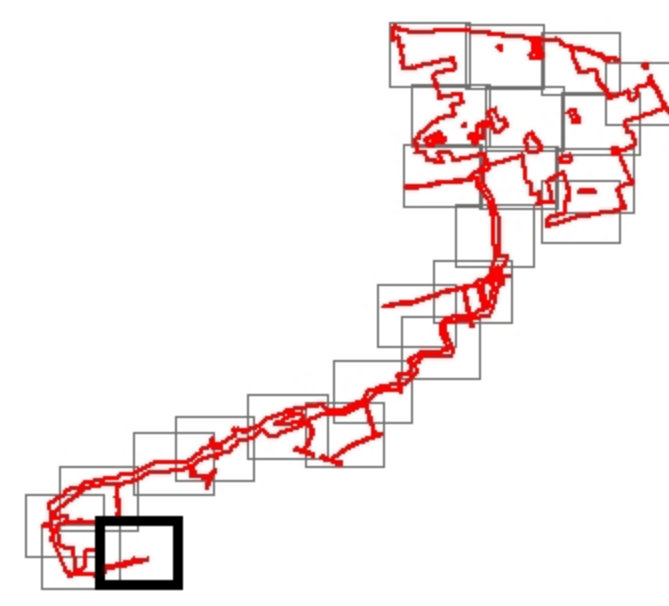
PROJECT
Tillbridge Solar Project

CLIENT
Tillbridge Solar Ltd.

CONSULTANT
 Aldgate Tower
 2, Leman Street
 London, E1 8FA
 United Kingdom
 T +44-0207-645-2000

- LEGEND**
- Order limits
 - Existing Features and Constraints**
 - Cable Route Corridor Access
 - - - Existing Public Rights of Way
 - - - Existing Hedgerow
 - - - Disused Railway Line
 - Existing Woodland
 - Retained Vegetation
 - Existing Watercourse

SHEET LAYOUT

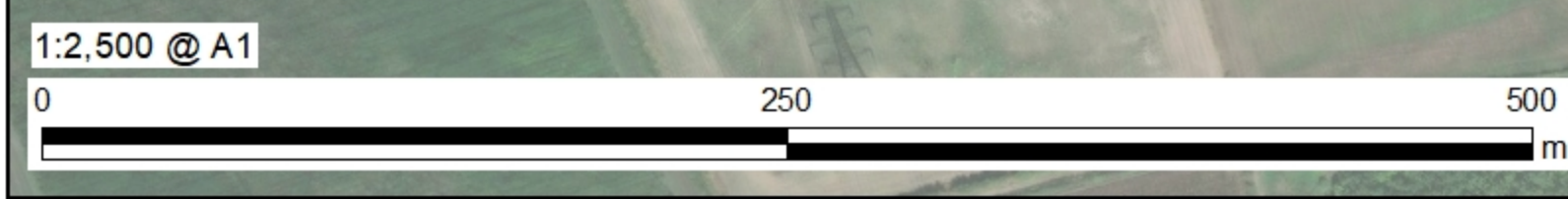


NOTES

Aerial Basemapping Service Layer Credits:
 Source: Esri, Maxar, Earthstar Geographics,
 and the GIS User Community
 The layout is taken from the Illustrative
 Layout and some component locations may
 be subject to change (e.g., solar stations,
 BESS, and tracks), as allowed by the DCO
 Application.

ISSUE PURPOSE

DCO Submission
PROJECT NUMBER
 60677969
PLAN TITLE
 Indicative Landscape Masterplan
FIGURE NUMBER
 25 of 25



The drawing has been prepared for the use of AECOM's client. It may not be used, modified, reproduced or relied upon by third parties, except as agreed by AECOM or as required by law. AECOM accepts no responsibility, and denies any liability whatsoever, to any party that uses or relies on this drawing without AECOM's express written consent. Do not scale this document. All measurements must be obtained from the stated dimensions.